

Clay Pot Rhizome Clips

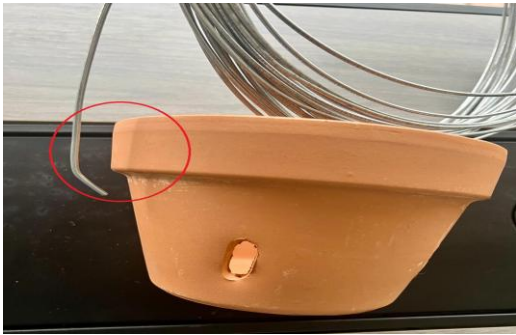
Items/Tools Required:

6" Needle Nose Pliers	Wire Cutters (Fence wire or Compound-Action type)
12-gauge Galvanized Steel Wire (Rolls or Strands)	A Clay Pot

Directions: (Example: A clip for a 6" clay pot. Length of clip desired + Pot "Lip" = 9")

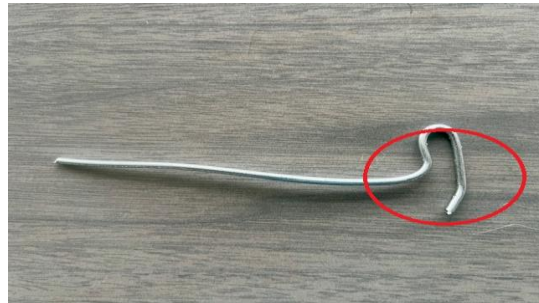
Step 1

Allow for Lip + 1/2" + Pot Width



Step 2

Using Needle Nose Pliers Bend the 3" portion to secure the clip



Step 3

Attach as Shown



Variation: Upright Support!



Variation: Across + Upright!

